



## Technical data sheet

# SBM App module

## Extension module for remote sauna control from mobile devices.

With the EOS SBM App module and the free "EOS Spa Control" app you can control your sauna with your smartphone or a tablet PC from any location (requires internet connection).

### Your advantages:

- Sauna control from any location worldwide (requires internet access) thanks to the operation on dynamic IP address basis
- Free EOS Spa Control app with simple self-explaining setup and intuitive operation.
- Simple and fast installation thanks to the compact cap rail housing with pre-mounted sauna bus cable for connection to the sauna control unit (plug & play)
- For Android and Apple iOS mobile devices.
- Very high protection by communication and data storage.
- Made in Germany quality from EOS

### Specifications and features:

Housing:	plastic, with cap rail housing
Power consumption:	< 1 W
Operating temperature:	from -20°C to 40°C
Connections:	1 x EOS sauna bus (6P6C, RJ12 plug) 1 x 10/100 Base-T Ethernet RJ45 jack, shielded
IP address distribution:	per DHCP, IPv4
Required ports:	7250 (firewall, for cloud connection)
Power supply:	24 V DC (via EOS sauna bus)
Installation:	wall-mounting on cap rail (requires IPx4 protection), may not be installed in corrosive atmosphere or environment subject to moisture condensation



Free EOS Spa Control app for mobile devices - control your sauna on the go!  
Mobile devices not included in the scope of delivery.

#### Compatible sauna control units:

- EOS EmoTec series
- EOS EmoStyle series
- EOS EmoTouch 3

For Android and Apple iOS.



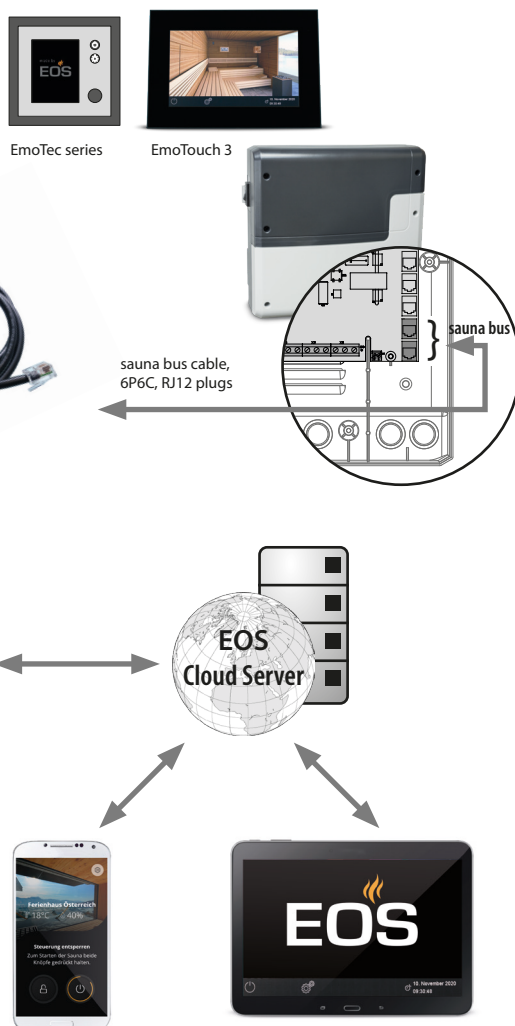
MADE IN GERMANY

## Connection overview

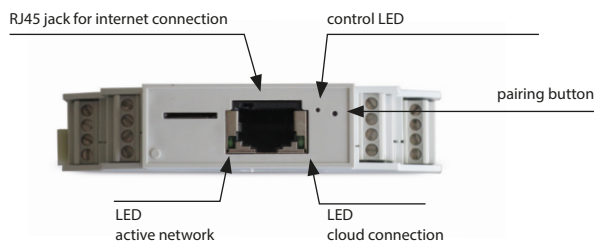
Compatible sauna control units:

- EOS EmoTec series
- EOS EmoStyle series
- EOS EmoTouch 3 Sauna

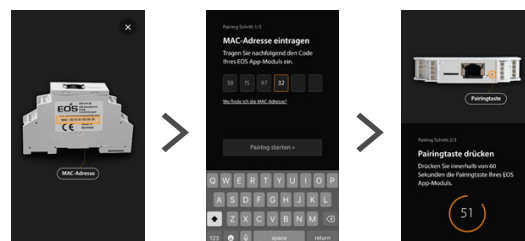
A firmware update may be necessary on some older models.



## Position of control elements



## Setup



- install and launch the „EOS Spa Control“ app
- enter the MAC address (printed on the module)
- touch the „pair“ button to launch pairing
- within 60 sec press the „pair“ button on the module for 1 sec with a pointed tool
- control LED will flash red shortly to confirm successful pairing
- app will confirm the pairing and will guide you through the final setup steps.

**For remote access and operation you will require an internet access which may cause additional costs.**

## Safety advice

**⚠ In the CENELEC countries the remote control may be only used in combination with the appropriate sauna safety system as per norm DIN EN 60335-2-53, such as the cover protection safety rail, EOSafe or a door lock system.**

**EOS strongly recommends the installation of a protective safety system even if such is legally not required. Risk of fire by remote start of the heater with an object forgotten on it!**

Item no.	Electrical connection	Connections	Power consumption	Required ports for cloud connection	Dimensions H/W/D in cm	Ambient temperature range	Weight without packing
94.5987	via sauna control unit	1 x sauna bus 6P6C, RJ12 1 x 10/100 Base-T Ethernet RJ45 jack, shielded	< 1 W	7250 (by firewall)	6 / 9 / 1,8	-20 to +40 °C	0,2 kg